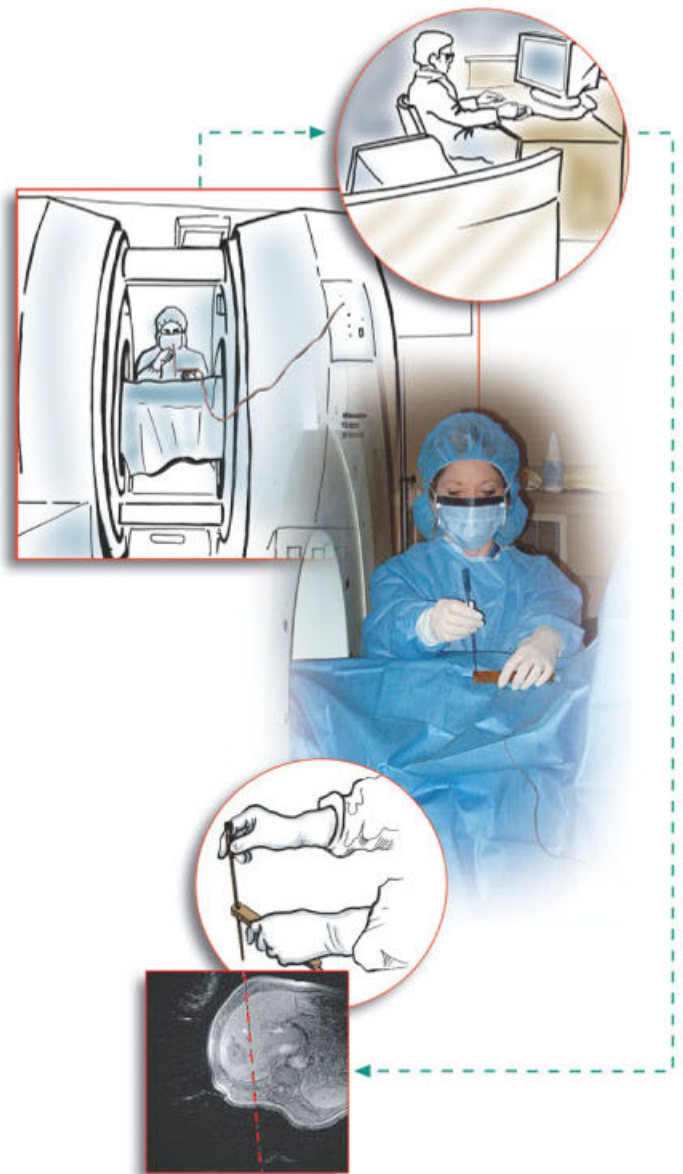


# Tracking System for MRI

The EndoScout tracking system provides accurate, realtime device tracking during scanning:

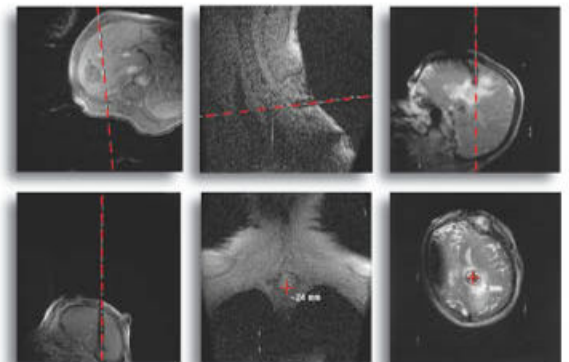
- Plug&track™ - easy system installation on any scanner.
- Gradient-based tracking: no line-of-sight limitations.
- Tracking location and orientation with a single sensor.
- Tracking in image coordinates (no need for registration).
- Fully customized tracking handles and tools:



## Clinical Applications

The EndoScout facilitates many MR-guided diagnostic and therapeutic procedures:

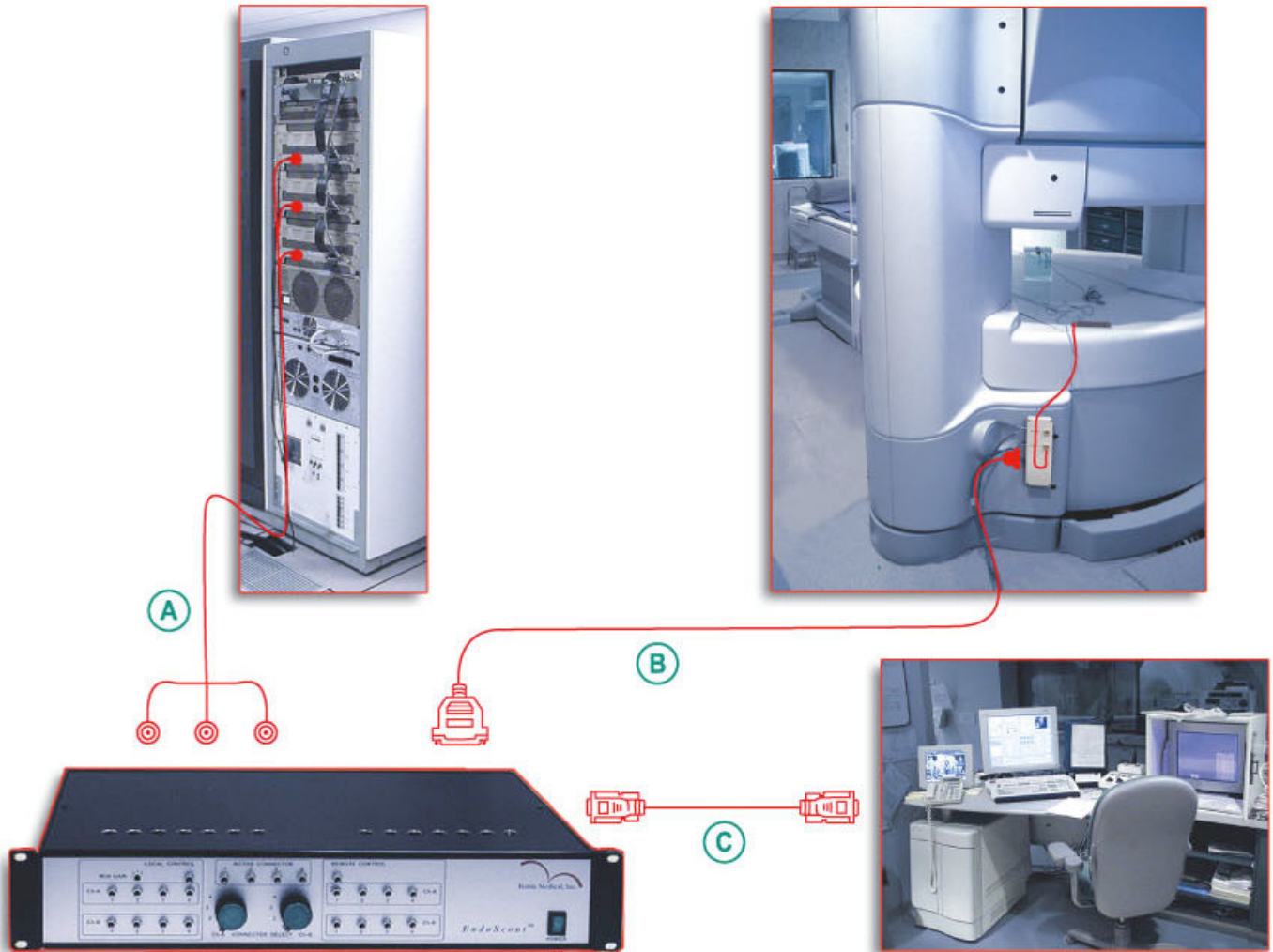
- Biopsy and aspiration (breast, brain, liver, prostate).
- Tumor RF/laser ablation (liver).
- Brachytherapy (prostate, kidney).
- Image-guided neurosurgery.
- Pain management (nerve blockage).



Liver RF ablation    Spinal cyst drainage    Brain biopsy

# What Vision Can Do

# Plug & Track™ - easy system installation



## Mode of operation

The EndoScout acquires the 3 gradient command signals (A) and the tracking sensor signals (B) and transmits the calculated location and orientation of the tracking sensor to the computer of the MR scanner (C).

## Specifications

- Realtime 6 degrees-of-freedom tracking during MR imaging with FSE, FGRE, SPGR, SSFSE.
- Number of tracking devices: 1 out of 4 ports.
- Tracking accuracy:  
Location: 2mm, orientation: 1.5 degrees (values represent 2 standard deviations of the tracking error population).
- Tracking Range: Up to 30cm from the center of the scanner.
- Tracking angle: unlimited (360°).
- Tracking Rate: up to 16 Hz.
- Input power: 120VAC/0.8A (60Hz) or 230VAC/0.4A (50Hz).



Robin Medical Inc. has been registered as compliant with the ISO 9001 standard by Amtac Certification Services Ltd.

P.O.B. 2414 Baltimore, MD 21203, USA.  
Email:office@robinmedical.com